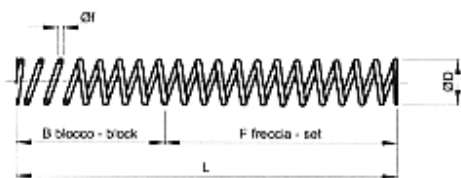
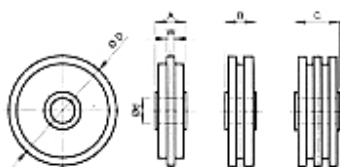


**Accessori / Accessories / Zubehör**


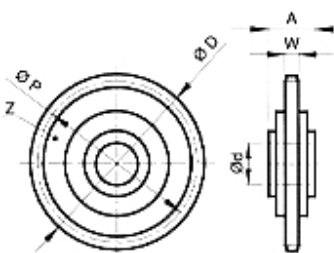
Molla Tipo: MB Z (Zincata) / MB X (Inox)  
 Spring Type: MB Z (Galvanized) / MB X (Stainless)  
 Feder Typ: MB Z (Verzinkt) / MB X (Rostfrei)

Tipo Type Typ	Cod. N°	Øf	L	ØD	B	F	Peso Weight Gewicht in Kg
MOLLA MB10 Z	BL001034	1,4	118	14	29,40	88,6	0,01
MOLLA MB20 Z	BL001036	1,6	118	14	33,60	84,4	0,01
MOLLA MB30 Z	BL001038	1,8	118	14,5	37,80	80,2	0,02
MOLLA MB10 X	BL001054	1,4	118	14	29,40	88,6	0,01
MOLLA MB20 X	BL001056	1,6	118	14	33,60	84,4	0,01
MOLLA MB30 X	BL001058	1,8	118	14,5	37,80	80,2	0,02



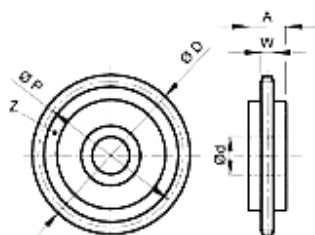
Rotella Tipo: R  
 Wheelset Type: R  
 Rädchen Typ: R

Tipo Type Typ	S Cod. N°	D Cod. N°	T Cod. N°	Catena Chain Kette	A	B	C	ØD	Ød	W	Peso Weight Gewicht in Kg		
											S.	D.	T.
R0	AR004233	AR004243		8 mm	18	18		70	16	2,5	0,04	0,04	
R1	AR004234	AR004244	AR004253	3/8"x7/32"	18	18	36	70	16	5	0,04	0,04	
R2	AR004235	AR004245	AR004254	1/2"x5/16"	18	36	36	70	16	7	0,04	0,10	0,10
R3	AR004236	AR004246	AR004255	5/8"x3/8"	18	36	50	90	16	9	0,08	0,16	0,18
R4	AR004237	AR004247	AR004256	3/4"x7/16"	18	36	49	90	16	11	0,08	0,18	0,20
R5	AR004238	AR004248		1"x17,02mm	18	50		110	20	16	0,14	0,20	
R6	AR004239			1"1/4x3/4"	18			110	20	18	0,15		
R7	AR004240			1"1/2x1"	24			110	20	24	0,22		



Pignoni tendicatena Tipo: PT  
 Sprocket wheelsets Type: PT  
 Kettenradsätze Typ: PT

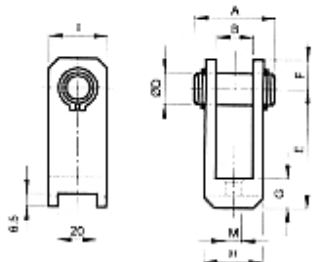
Tipo Type Typ	Cod. N°	Catena Chain Kette	Z	A	Ød	ØP	ØD	W	Peso Weight Gewicht in Kg
PT1-21	TB001195	3/8"x7/32"	21	18,3	16 <sup>+0,25 -0,13</sup>	63,90	68,0	5,3	0,17
PT2-16	TB001196	1/2"x5/16"	16	18,3	16 <sup>+0,25 -0,13</sup>	65,10	69,5	7,2	0,18
PT2-18	TB001197	1/2"x5/16"	18	18,3	16 <sup>+0,25 -0,13</sup>	73,14	77,8	7,2	0,23
PT3-14	TB001198	5/8"x3/8"	14	18,3	16 <sup>+0,25 -0,13</sup>	71,34	78	9,1	0,24
PT3-17	TB001199	5/8"x3/8"	17	18,3	16 <sup>+0,25 -0,13</sup>	86,39	93,0	9,1	0,36
PT4-15	TB001200	3/4"x7/16"	15	18,3	16 <sup>+0,25 -0,13</sup>	91,63	99,8	11,1	0,46
PT5-12	TB001201	1"x17,02 mm	12	17,7	20 <sup>+0,39 -0,00</sup>	98,14	109,0	16,2	0,74



Pignoni tendicatena in plastica Tipo: PN  
 Plastic Sprocket wheelsets Type: PN  
 Kettenradsätze aus Plastik Typ: PN

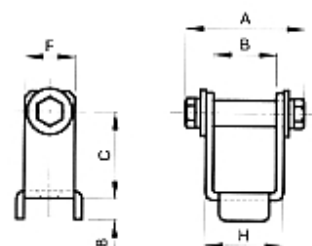
Tipo Type Typ	Cod. N°	Catena Chain Kette	Z	A	Ød	ØP	ØD	W	Peso Weight Gewicht in Kg
PN1-21	RE002180	3/8"x7/32"	21	16	16 <sup>+0,25 -0,13</sup>	63,90	68,0	5,3	0,15
PN2-18	RE002182	1/2"x5/16"	18	16	16 <sup>+0,25 -0,13</sup>	65,10	69,5	7,2	0,16
PN3-17	RE002184	5/8"x3/8"	17	16	16 <sup>+0,25 -0,13</sup>	71,34	78	9,1	0,30

Forcella Tipo: FF  
Bracket Type: FF  
Gabel Typ: FF



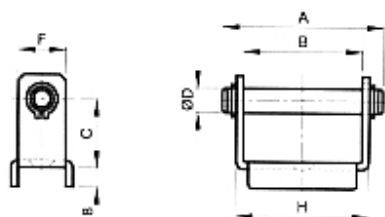
Tipo Type Typ	Cod. N°	A	B	Ø D	E	F	G	H	I	M	Peso Weight Gewicht in Kg
F 10 F	BL010560	40	19	16	60	15	15	30	30	8	0,12
F 11 F	BL010561	45	19	16	70	15	15	35	30	8	0,16
F 12 F	BL010562	60	37	16	60	15	15	50	30	8	0,18

Forcella Tipo: FS  
Bracket Type: FS  
Gabel Typ: FS

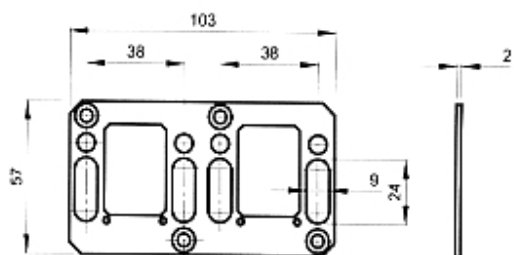


Tipo Type Typ	Cod. N°	A	B	C	F	H	Peso Weight Gewicht in Kg
FS A	BL010565	45	25	34	20	32	0,08
FS B	BL010566	55	35	34	20	42	0,08
FS C	BL010567	65	45	34	20	52	0,10

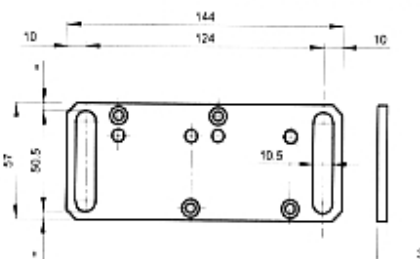
Forcella Tipo: FR  
Bracket Type: FR  
Gabel Typ: FR



Tipo Type Typ	Cod. N°	A	B	C	Ø D	F	H	Materiale Material Material	Peso Weight Gewicht in Kg
FR 1	BL010570	60	45	23	8	20	52	Acciaio verniciato Painted steel Lackiertem Stahl	0,08
FR 2/3	BL010571	66	52	28	10	20	58	Acciaio verniciato Painted steel Lackiertem Stahl	0,10
XFR 1	BL010575	54	42	23	8	20	49	Inox / Stainless / Rostfrei	0,08
XFR 2/3	BL010576	72	58	28	10	20	64	Inox / Stainless / Rostfrei	0,11



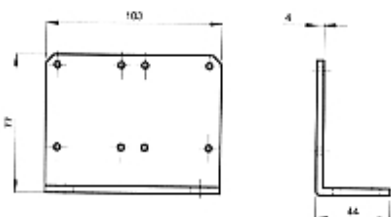
Piastra di unione Tipo: PU Cod: BL001270 (Peso 0,06 Kg)  
Joint plate Type: PU Cod: BL001270 (Weight 0,06 Kg)  
Verbindungsplatte Typ: PU Cod: BL001270  
(Gewicht 0,06 Kg)



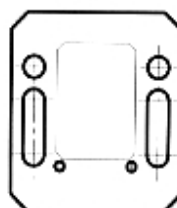
Piastra di fissaggio Tipo: PD Cod: BL001274 (Peso 0,18 Kg)  
Fixing plate Type: PD Cod: BL001274 (Weight 0,18 Kg)  
Einspannungsplatte Typ: PD Cod: BL001274  
(Gewicht 0,18 Kg)



Piolo Precarica BL001080  
Preloading pin BL001080  
Vorspannzapfen BL001080



Piastra angolare Tipo: PA Cod: BL001278 (Peso 0,38 Kg)  
Angular plate Type PA: Cod: BL001278 (Weight 0,38 Kg)  
Winkelplatte Typ PA: Cod: BL001278 (Gewicht 0,38 Kg)



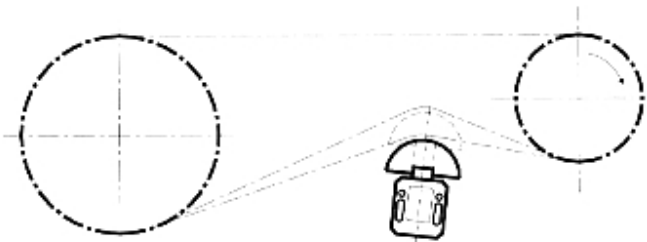
Corpo Tipo M6 Cod: BL001000 (Peso 0,03 Kg)  
Corpo Tipo M8 Cod: BL001005 (Peso 0,03 Kg)

Body Type M6 Cod: BL001000 (Weight 0,03 Kg)  
Body Type M8 Cod: BL001005 (Weight 0,03 Kg)

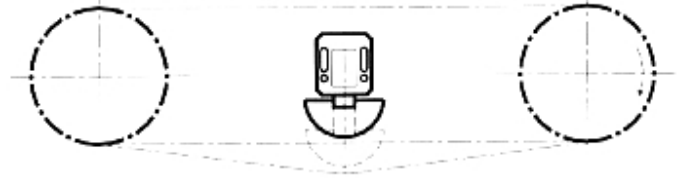
Körper Typ M6 Cod: BL001000 (Gewicht 0,03 Kg)  
Körper Typ M8 Cod: BL001005 (Gewicht 0,03 Kg)



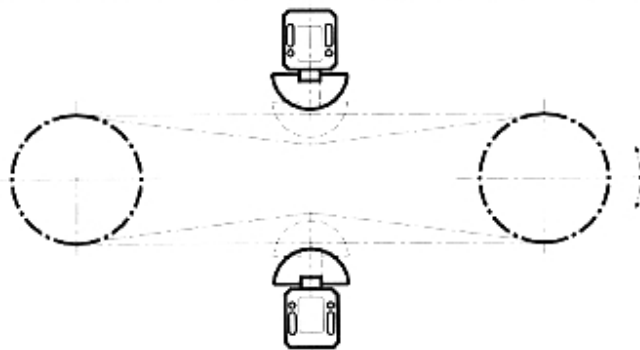
Colonna Cod: BL001020 (Peso 0,02 Kg)  
Column Cod: BL001020 (Weight 0,02 Kg)  
Säule Cod: BL001020 (Gewicht 0,02 Kg)

**Esempi di applicazione / Examples of application / Anwendungsbeispiele**


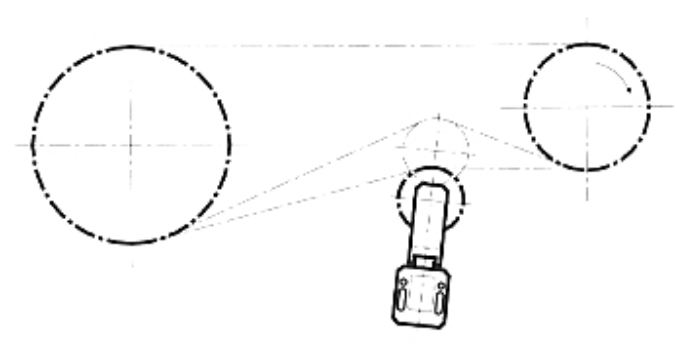
**Fig. - Bild 1**  
Tendicatena - Chain tightener - Kettenspanner



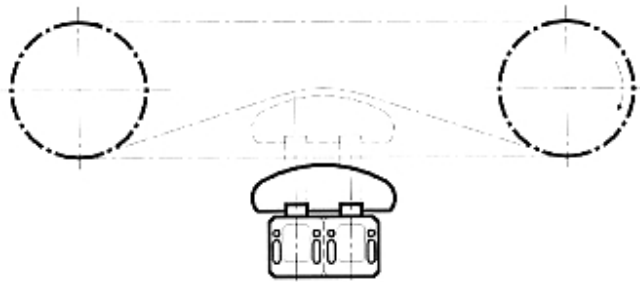
**Fig. - Bild 2**  
Tendicatena interno - Internal chain tightener - Interner Kettenspanner



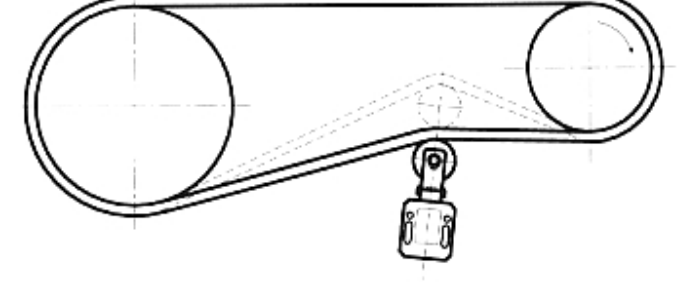
**Fig. - Bild 3**  
Doppio tensionamento per movimenti reversibili  
Double tightening for reversible movements  
Doppelte Spannung für umkehrbare Bewegungen



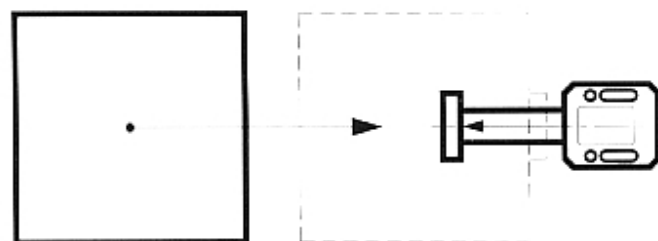
**Fig. - Bild 4**  
Versione ad alta velocità a mezzo pignone su cuscinetto  
Version for use with high speed, with pinion mounted on bearing  
Ausführung für hohe Geschwindigkeit mittels Ritzels auf Lager



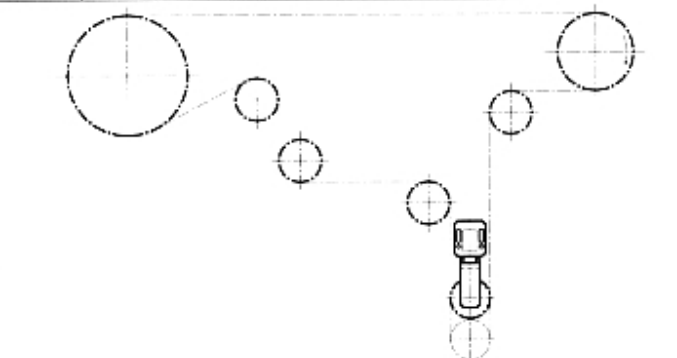
**Fig. - Bild 5**  
Recupero catena per grandi interassi  
Chain recovery for big interaxis  
Rückgewinnung der Kette für große Achsenabstände



**Fig. - Bild 6**  
Tendinghia  
Belt stretcher  
Riemenspanner



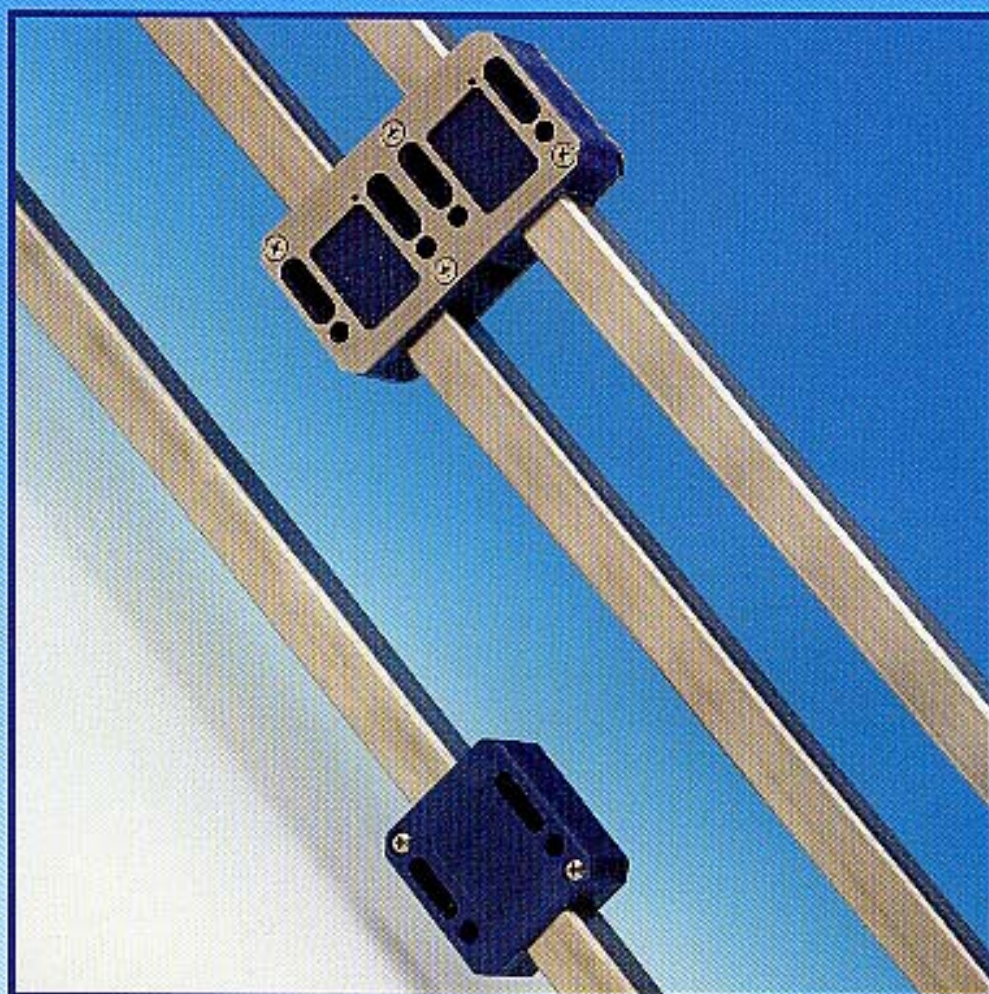
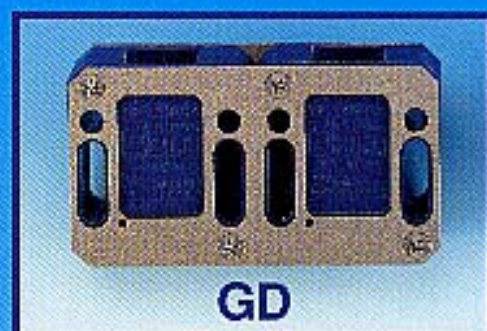
**Fig. - Bild 7**  
Deceleratore  
Decelerator  
Verzögerer



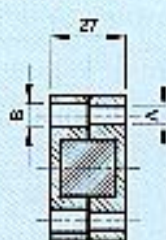
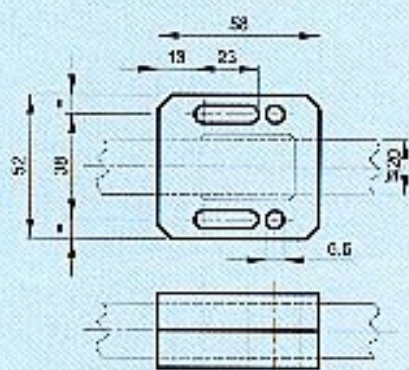
**Fig. - Bild 8**  
Tensione automatica di una catenaria  
Automatic tension of a catenary  
Automatische Spannung einer Kettenlinie



**GUIDE DI SCORRIMENTO ASSIALI**  
**AXIAL SLIDES**  
**AXIALE GLEIT BAHNEN**





**Guide di scorrimento assiali - Tipo: GS / Axial slides – Type: GS / Axiale Gleitbahnen – Typ: GS**


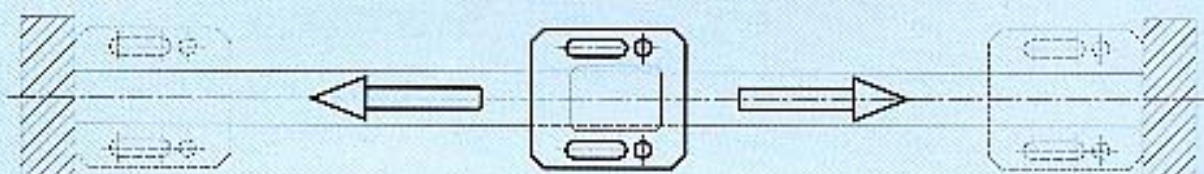
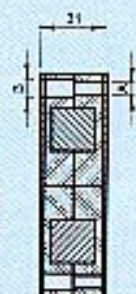
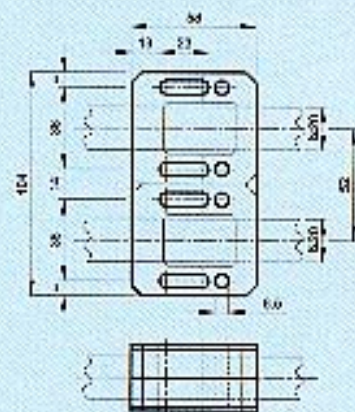
I GS sono utilizzati per comporre delle guide di scorrimento su profili quadrati di lato 20 mm in alluminio o acciaio. GS è realizzato completamente in materiale plastico con viti in acciaio inox.

GS are used to make up slides on aluminium or steel square profiles which have the side 20mm. GS is completely built in plastic with screws in stainless steel.

GS werden benutzt, um Gleitbahnen auf viereckige Profile aus Aluminium oder Stahl, die die Seite 20mm haben, zu bilden. GS ist vollständig aus Plastikmaterial mit Schrauben aus rostfreiem Stahl hergestellt.



Tipo Type Typ	Cod. N°	A	B	Peso Weight Gewicht in Kg
GS 6	BL 010580	6,5	6,5	0,06
GS 8	BL 010582	8,5	8,5	0,06
GS 6/8	BL 010584	6,5	8,5	0,06

**Esempio di applicazione GUIDA DI SCORRIMENTO GS / Example of application of the GS SLIDE / Anwendungsbeispiel des GS GLEITBAHN**

**Guide di scorrimento assiali - Tipo: GD / Axial slides – Type: GD / Axiale Gleitbahnen – Typ: GD**


I GD sono utilizzati per comporre delle guide di scorrimento su profili quadrati di lato 20 mm in alluminio o acciaio. I GD sono realizzati completamente in materiale plastico con piastre e viti in acciaio inox.

GD are used to make up slides on aluminium or steel square profiles which have the side 20mm. GD is completely built in plastic with plates and screws in stainless steel.

GD werden benutzt, um Gleitbahnen auf viereckige Profile aus Aluminium oder Stahl, die die Seite 20mm haben, zu bilden. GD ist vollständig aus Plastikmaterial mit Platten und Schrauben aus rostfreiem Stahl hergestellt.



Tipo Type Typ	Cod. N°	A	B	Peso Weight Gewicht in Kg
GD 6	BL010590	6,5	6,5	0,25
GD 8	BL010592	8,5	8,5	0,25
GD 6/8	BL010594	6,5	8,5	0,25

**Esempio di applicazione GUIDA DI SCORRIMENTO GD / Example of application of the GD SLIDE / Anwendungsbeispiel des GD GLEITBAHN**
